

SCHEDA TECNICA
BA internal threaded steel sleeve

 EN
 rev 12/2018
 p. 1/1

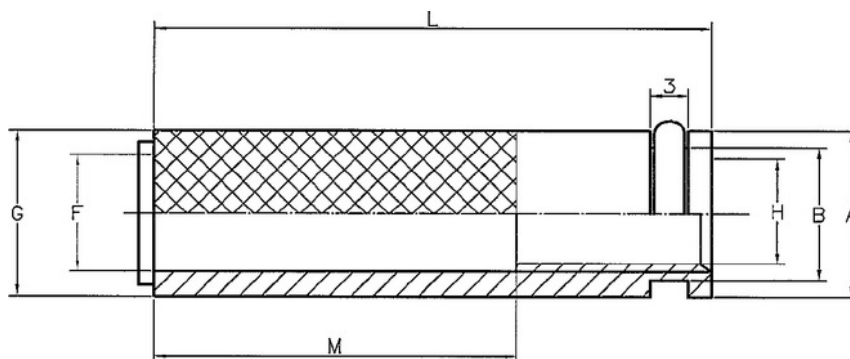

| art. | description | nominal dimensions mm | thread | hole depth mm |
|-------|-------------|--------------------------|--------|------------------|
| CBA06 | BA6 | 8 x 50 | M6 | 55 |
| CBA08 | BA8 | 12 x 80 | M8 | 85 |
| CBA10 | BA10 | 14 x 80 | M10 | 85 |
| CBA12 | BA12 | 16 x 80 | M12 | 85 |

Material

Carbon steel

Load data

Pull-our resistance depends on type of chemical anchor

Dimensions


| art. | A | B | F | G | H | M | L |
|-------|------|------|------|------|-----|------|----|
| CBA06 | 8.15 | 6.8 | 5.9 | 8.25 | M6 | 28.5 | 48 |
| CBA08 | 12.1 | 9.1 | 8.5 | 12.2 | M8 | 52 | 80 |
| CBA10 | 14.1 | 10.9 | 10.5 | 14.2 | M10 | 53.5 | 80 |
| CBA12 | 16.1 | 13.9 | 12.5 | 16.2 | M12 | 53.5 | 80 |